

DIBAL

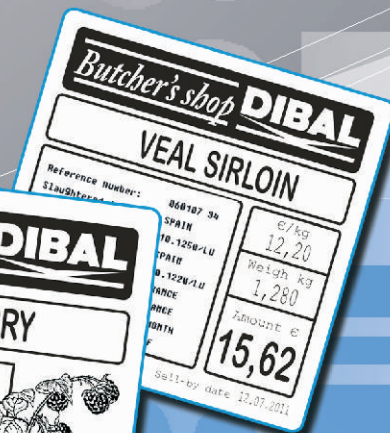
LP-545



(platform not included)

Weigh-Price Labeller

connectable to weighing platform



Weighing

- Connection to **1 platform, single or 4 loadcells.**
- Up to **6.000 divisions, multi-range.**
- **Metrological components in a separate enclosure.**
(it allows access to the main elements of labeller without breaking metrological seals).
- **Optional CE Verification** for labeller + platform.



Housing

- **Stainless steel.**
- Dimensions (mm): 285 (width) x 285 (depth) x 240 (high).

Display

- **Dot matrix graphic LCD.**
- 2 types of displays, selectable by user: complete information or weight only (with checkweigher).



Keyboard

- 105 keys (15 x 7).
- 80 x 2 direct PLU keys.



Printer

- **2" printer. Direct thermal.**
- 100 mm/sec.
- Possibility to print **receipts or die-cut labels.**
Linerless (label rolls without backpaper) optional.
- **Cassette system for immediate change of paper roll.**
- Opto detector for withdrawn labels.
- Possibility to connect to external printer (consult us).



Barcodes

- Printing of **EAN-13, GS-1 Databar and EAN-128.**
- **Connection to scanner** to read barcodes.
- Scanner powered by the labeller (5 VDC).



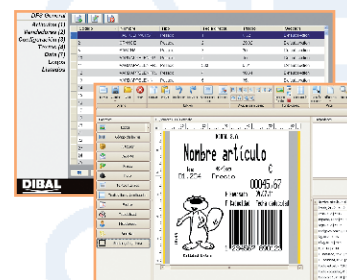
Communications

- PC communications: **Ethernet TCP/IP.**
- **Wi-Fi** (802.11) optional.
- Connection to labeller from mobile devices by means of **Web Server** (Dibal Web Server, optional).
- **USB port**, for load/download data and configurations, backup copies and firmware updates.



Optional Software

- **DFS+DLD:** labeller **configuration, design of labels, sending and reception of data and reports** (fully customizable).
- **RGI / DGI / SDK:** Advanced tools for easy **integration** of labeller with company backoffice.



Main Features

- Up to 20 operators.
- Up to 10.000 articles (PLUs) in memory.
- 3 names (20 c.) + 20 texts (24 c.) + 1 text (1024 c.)
- PLU prices: regular, offer, by weight segments, discounts.
- Global expiry date, alphanumerical batch.
- Recipes.
- Logos (100).
- Generic traceability.
- Labels up to 60 (printing: 54) x 150 mm (w x l).
- 20+40 formats, 60 information fields.
- Printing by PLU or automatic.
- Printing of label copies.
- Labels of totals, with 4 levels (i.e.: tray-box-pallet-container).
- Connection to scanner for EAN-13, EAN-128 reading.
- Quick change of paper roll (cassette system).
- Receipt working mode.
- Printing of reports.
- Inventory.
- Optional "anti-blackout" internal battery.
- Macros (recording of a sequence of keys, to create a "shortcut" to any task).